

Mercury Tronic 4.0 - 5.5

Construction features and advantages:

- The EasyTronicMicro II controller manages all compressor functions.
- Star-delta starting.
- Poly-V belt drive providing long service life and minimum maintenance.
- Operating pressure: 8 - 10 and 13 bar, with power of 4 - 5.5 kW.
- Independent ventilation for lower noise level.
- Tank-mounted models with ball valve for smooth condensate drain.
- Very compact design.
- Low noise: 60-64 dB(A).
- The machine is supplied ready for use: simply connect the machine to the power supply and the distribution system to start work without any additional effort.
- Tank-mounted versions are also available with refrigeration dryer (ES), ready for instant operation without any additional effort.
- Oil filter and oil separator filter (both spin-on type) and the air filter are quite large: this means long service intervals and lower costs.



The display of the **EasyTronicMicro II** controller shows working pressure, working/load hours, load/idle running, oil temperature.



■ MERCURY Tronic 5.5-10

Available versions:

- floor mounted compressor;
- compressor + tank (200, 270 or 500 litres);
- compressor + tank (200, 270 or 500 litres) + dryer.



FS14

Air-ends are entirely designed and made in Italy, just as the intake regulator and separator block with minimum pressure/check valve.



■ MERCURY Tronic 5.5-10

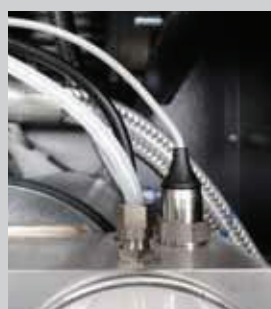
■ MERCURY Tronic 4.0-10-200 ES

■ MERCURY Tronic 5.5-10-500 ES

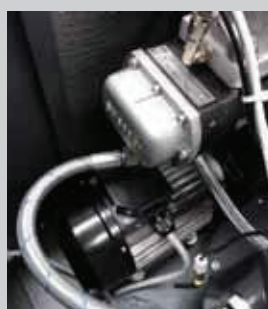
4-5.5 kW (5.5-7.5 HP)

ELECTRONIC														
Model	Code	Tank capacity	Motor Power		Air delivered			Working pressure		Noise level	Connection	Weight		Dimensions
			ℓ	kW	HP	l/min.	m ³ /h	c.f.m.	bar			p.s.i.	dB(A)	
Floor mounted														
MERCURY Tronic 4.0-08	V51JR92N1N564	–	4	5.5	580	34.8	20.5	8	116	60	1/2"	94	208	58 x 48 x 76
MERCURY Tronic 4.0-10	V51JP92N1N564	–	4	5.5	485	29.1	17.1	10	145	60	1/2"	94	208	58 x 48 x 76
MERCURY Tronic 4.0-13	V51JV92N1N564	–	4	5.5	330	19.8	11.6	13	188	60	1/2"	94	208	58 x 48 x 76
MERCURY Tronic 5.5-08	V51JW92N1N564	–	5.5	7.5	720	43.2	25.4	8	116	64	1/2"	125	276	60 x 52 x 78
MERCURY Tronic 5.5-10	V51JO92N1N564	–	5.5	7.5	650	39.0	22.9	10	145	64	1/2"	125	276	60 x 52 x 78
MERCURY Tronic 5.5-13	V51JM92N1N564	–	5.5	7.5	485	29.1	17.1	13	188	64	1/2"	125	276	60 x 52 x 78
With tank														
MERCURY Tronic 4.0-08 200	V77JR92N1N544	200	4	5.5	580	348	20.5	8	116	60	1/2"	151	333	144 x 51 x 128
MERCURY Tronic 4.0-10 200	V77JP92N1N544	200	4	5.5	485	29.1	17.1	10	145	60	1/2"	151	333	144 x 51 x 128
MERCURY Tronic 5.5-08 270	V91JW92N1N544	270	5.5	7.5	720	43.2	25.4	8	116	64	1/2"	203	448	156 x 57 x 139
MERCURY Tronic 5.5-10-270	V91JO92N1N544	270	5.5	7.5	650	39.0	22.9	10	145	64	1/2"	203	448	156 x 57 x 139
MERCURY Tronic 5.5-08-500	V83JW92N1N544	500	5.5	7.5	720	43.2	25.4	8	116	64	1/2"	236	520	198 x 60 x 148
MERCURY Tronic 5.5-10-500	V83JO92N1N544	500	5.5	7.5	650	39.0	22.9	10	145	64	1/2"	236	520	198 x 60 x 148
With tank and dryer														
MERCURY Tronic 4.0-08-200 ES	V77JR92N1N644	200	4	5.5	580	34.8	20.5	8	116	60	1/2"	181	399	144 x 51 x 128
MERCURY Tronic 4.0-10-200 ES	V77JP92N1N644	200	4	5.5	485	29.1	17.1	10	145	60	1/2"	181	399	144 x 51 x 128
MERCURY Tronic 5.5-08-270 ES	V91JW92N1N644	270	5.5	7.5	720	43.2	25.4	8	116	64	1/2"	215	474	156 x 57 x 139
MERCURY Tronic 5.5-10-270 ES	V91JO92N1N644	270	5.5	7.5	650	39.0	22.9	10	145	64	1/2"	215	474	156 x 57 x 139
MERCURY Tronic 5.5-08-500 ES	V83JW92N1N644	500	5.5	7.5	720	43.2	25.4	8	116	64	1/2"	277	611	198 x 60 x 148
MERCURY Tronic 5.5-10-500 ES	V83JO92N1N644	500	5.5	7.5	650	39.0	22.9	10	145	64	1/2"	277	611	198 x 60 x 148

Free air delivery as per ISO 1217 Annex C, at 7.5 - 9.5 - 12.5 bar at the compressor outlet. ± 3 dB (A) as PNEUROP/CAGI PN-NTC 2.3.



Pressure transducer
The transducer guarantees an accurate and stable operation during the time. It allows direct modification of the working pressure from the electronic controller without any mechanical intervention.



Air-oil circuit
All air-oil circuit hoses are made of rubber covered with a metal mesh resistant to high temperatures.



Intake regulator
Normally open electro-pneumatic system. Adjusts compressor working to guarantee minimum pressure when running idle and maximum saving upon start-up.

Advanced controllers

The advanced controllers fitted to the NU AIR screw compressors have been specifically developed to guarantee optimum monitoring and regulation of the compressors operation, allowing flexibility and full programming of the complete compressed air station for maximum efficiency and safety.



■ ETMII electronic controller Installed on models from 4 to 15 kW.

Controller with multi-function backlight display, the menu is alphanumeric type. In the main screen are displayed:

- Working pressure (offload/load pressure);
- Oil temperature;
- Total working hours;
- On-load working hours;
- Compressor status led (stand-by, offload, load);
- Hours remaining before maintenance.

Four maintenance timers (air cartridge, oil, oil filter, oil separator).
Automatic re-start after power failure.
Cooling fan temperature settable.
Compressor remote start settable.
Integrated sequence phase relay.



■ ETIV electronic controller Installed on models from 18.5 to 75 kW.

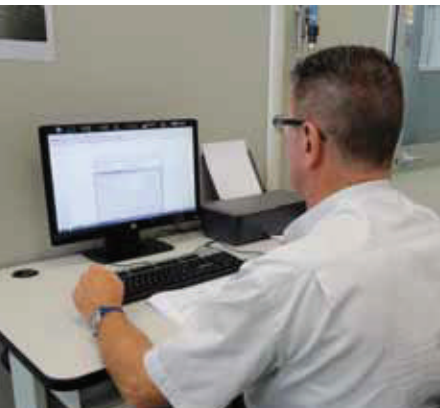
Controller with multi-function backlight LCD graphic display, the menu is drop down type. In the main screen are displayed:

- Working pressure (offload/load pressure);
- Oil temperature;
- Compressor status (stand-by, offload, load);
- Fan status (off/on);
- Date and time;
- Hours remaining before maintenance;
- Inverter use percentage.

Expansion module (on demand): GSM/GPRS/Ethernet/WiFi module (for on-line compressor status, remote assistance, connection with PC, Smartphone and Tablet, connection between neighbour compressors).

Master/slave function: it is possible to connect up to 4 compressors for managing distribution of the workload in such a way to equalize the hours dynamically changing set pressures of the various compressors:





Screw technology

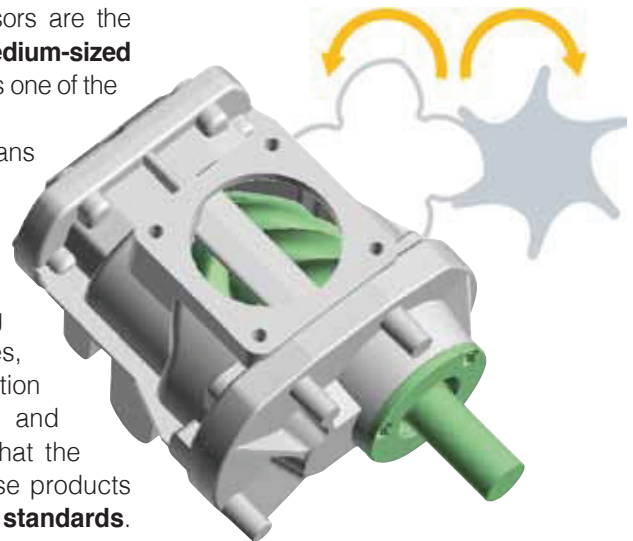
- NU AIR air-ends feature **one of the most advanced rotor profile design available**. The manufacturing process is fully **integrated**, thanks to ultra modern machine tools and sophisticated operating instrumentation that provide the highest quality standard.
- A solid modeling CAD system ensures the ideal components arrangement.
- The production process of the rotors goes through 4 different machining steps that make it possible to achieve superior machining accuracy and consistent performance. This level of precision means any male rotor can be perfectly matched with any female counterpart.
- All air-ends are individually tested two times: after their manufacture and a further time following assembly on the completed compressor.

Innovation

- NU AIR's **construction philosophy is based on the selection and simple assembly** of the most reliable and efficient technical solutions. The higher wear resistant Poly-V belt drive, the oversized combined air/oil exchanger with centrifugal cooling fan and thermostatic control to ensure the ideal operating temperature, and high-efficiency electrical motors, make NU AIR compressors robust and reliable work companions, even in the most heavy-duty conditions.

Quality

- NU AIR rotary screw compressors are the answer to the needs of **small and medium-sized enterprises**, where compressed air is one of the main sources of energy. A team of highly skilled technicians and operators work meticulously to check product efficiency and quality, relying on the most up-to-date technology and sophisticated equipment. Assembly and testing performed on automated lines, robotic systems of the latest generation and computer tools for design and control are the main investments that the company has implemented to realise products that meet the market's **quality standards**. In addition and most importantly, components are manufactured on CNC machines and are **100% tested**.



Production

- The entire production procedure is carried out **in-house, at our Italian production plants**; design, machining, assembly, testing, packaging and shipment. Every product, built in compliance to the applicable standards, is closely followed up in all process steps by trained and qualified staff, to ensure that specific quality and functional tests are passed. Besides the fully-assembled product, NU AIR offers a wide range of air-ends, intake regulators, thermostatic valves and accessories for the assembly of rotary compressors.



Customer Care

Besides manufacturing products of the highest quality and technological content, NU AIR offers its customers a service that meets their demands. The first objective is to guarantee an all-round technical and marketing support, identifying their needs and offering the most suitable solutions, nurturing a relation of mutual cooperation and trust over time. NU AIR has a skilled and motivated team that can provide several services: a call center help-desk, technical on-site consultation, customized price quotes, turnkey projects, maintenance plans, update courses, etc.



"Hot-Line" Service: fast shipment of spare parts



Our "Hot-Line" service can prepare and ship urgent* spare parts orders within a day (if received before 12.00 p.m.).

** Specify "Hot-Line" on the order.
Max. 5 codes, 1 piece per code.*

NU AIR guarantees the origins of all components, which are specifically manufactured and tested to be used on our compressors. The use of original, certified spare parts guarantees the efficiency and reliability of the compressor, it extends its lifespan and lowers maintenance costs.



Original spare parts

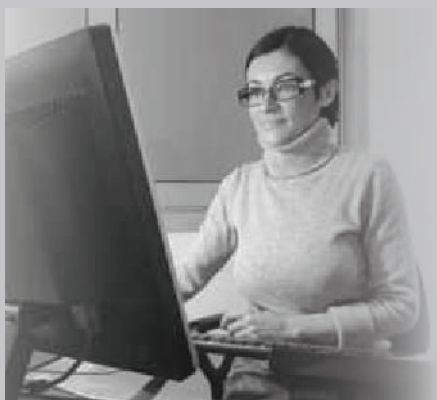
2-year Warranty on screw unit and on electronic controller



We offer planned service agreements, with the option of extending the Warranty.

On the NU AIR website, it is possible to check out the exploded views and spare parts lists for any compressor model whenever needed.

www.nuair.it



On-line consultation of exploded views and spare parts lists